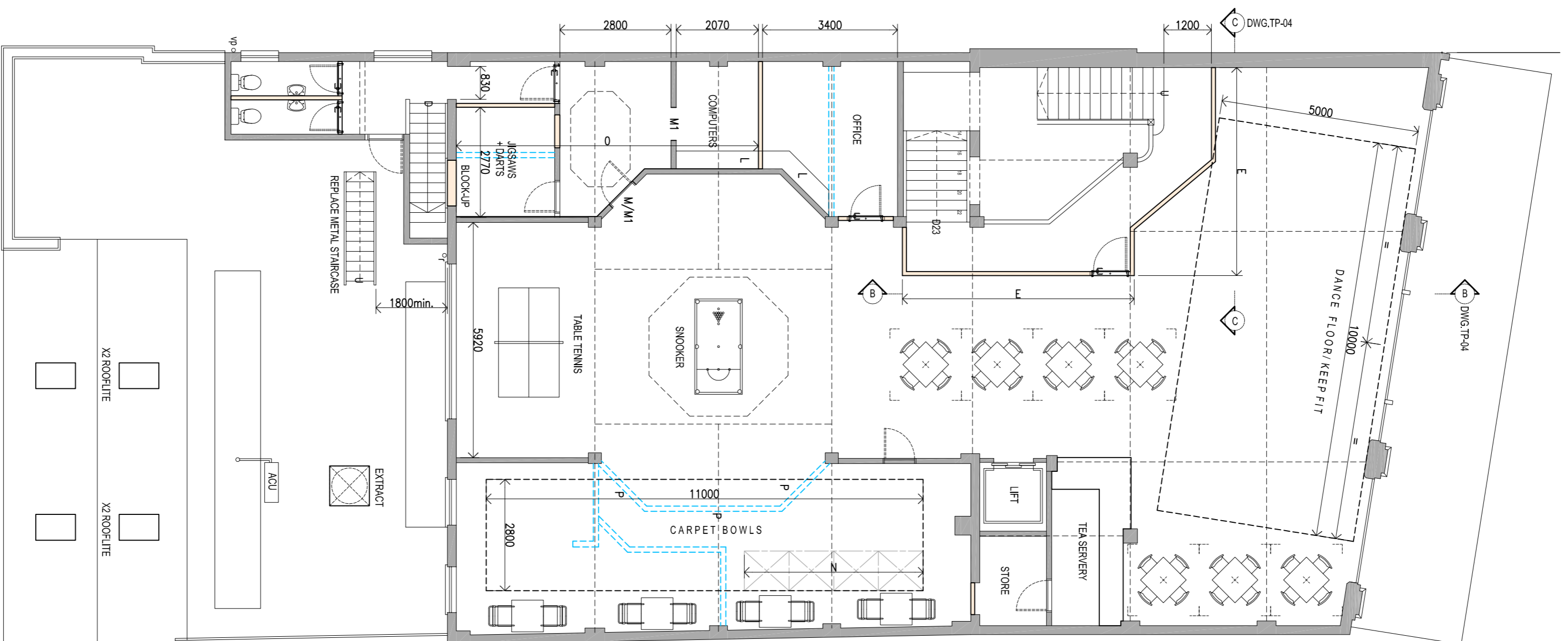
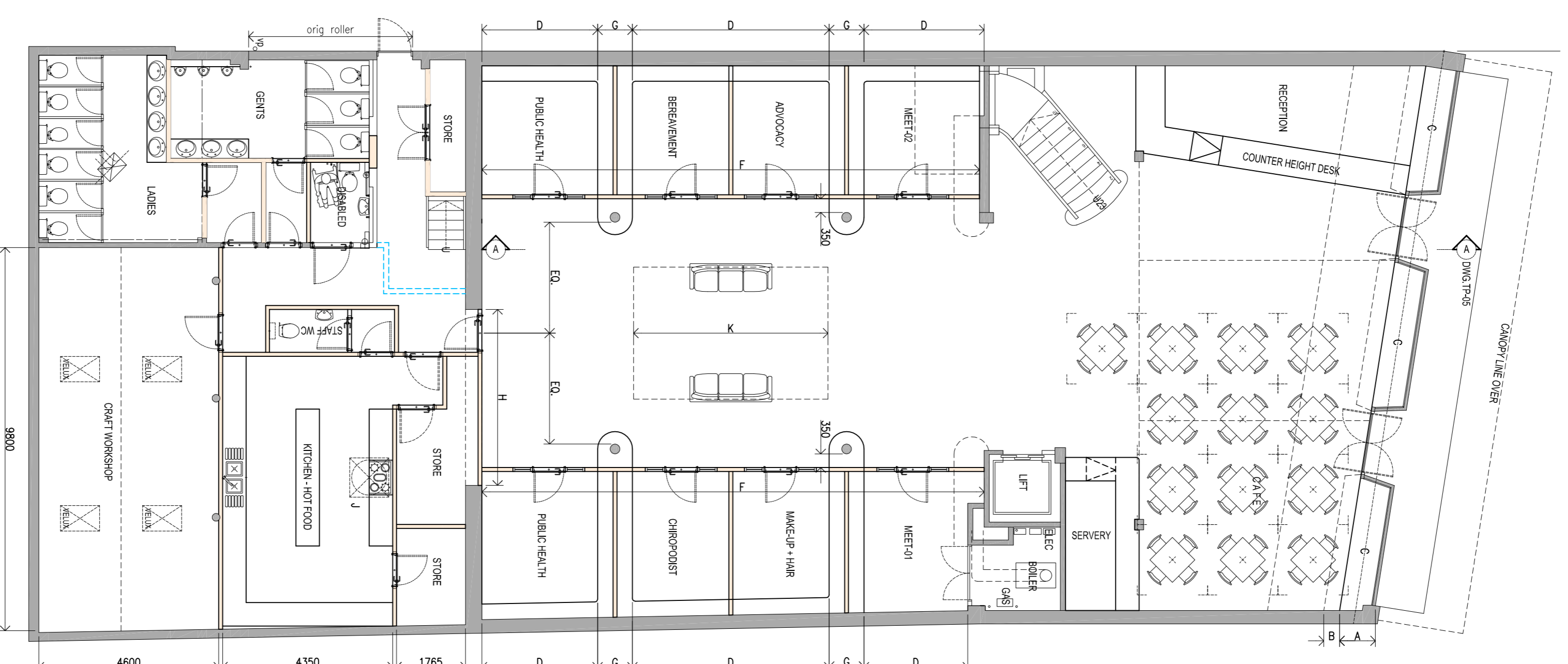


SECOND FLOOR PLAN



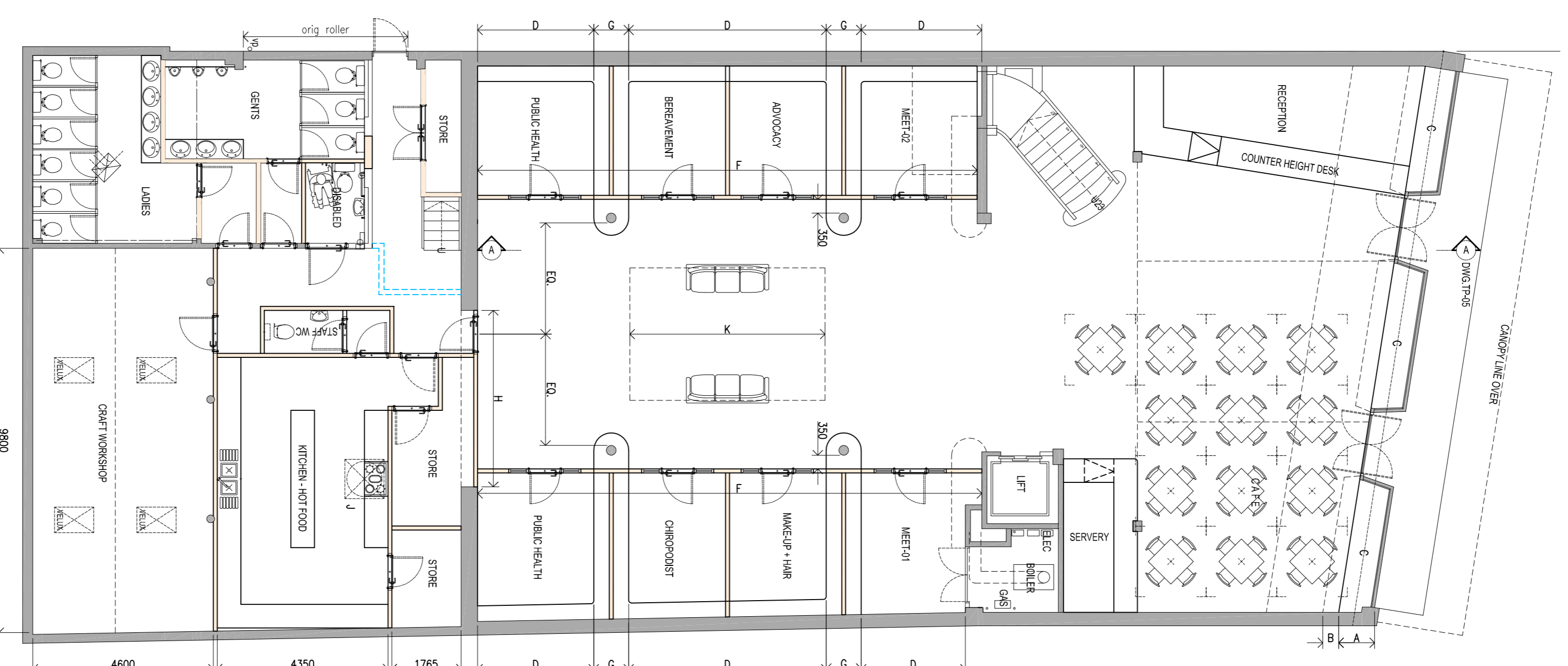
FIRST FLOOR PLAN



GROUND FLOOR PLAN

- KEY - GROUND FLOOR**
- A RETAIN EXISTING SHIPFRONT
 - B REMOVE TERRACE DISPLAY FITTINGS
 - C RETAIN RETAIL DISPLAY
 - D RETAIN INCORPORATE WALL SHELVING
 - E RE-RESISTING GLASS SCREEN
 - F GLAZED WALL DIVIDER - SEE DETAIL ON DWG.
 - G RETAIN ART DECO STYLE ISLAND DISPLAY
 - H RETAIN EXISTING ARCH WITH DOORSET LOCATED CENTRAL
 - J CEILING UP LIGHT FEATURE RETAINED
 - K RETAIN EXISTING SHIP SHELVING
 - L FORM NEW DOOR OPENING
 - M REMOVE AND RE-USE EXISTING DOOR
 - N RETAIN EXISTING W/AY GLASS BLOCK FLOORING
 - O LAYERS FIBRELINE PLASTER BOARD FOR 30MINUTE FIRE PROTECT
 - P RETAIN CORNICE PROFILES ABOVE 2.4M HIGH
 - Q STUDWORK-PLASTERBOARD PARTITION PAINTED

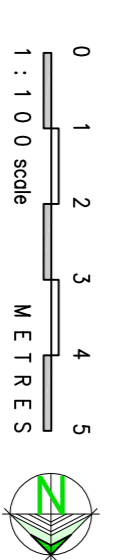
- KEY - CONSTRUCTION**
- EXISTING BUILDING FABRIC
 - PROPOSED NEW LIGHTWEIGHT STUD WALL-PLASTER FINISH
 - DEMOLITION



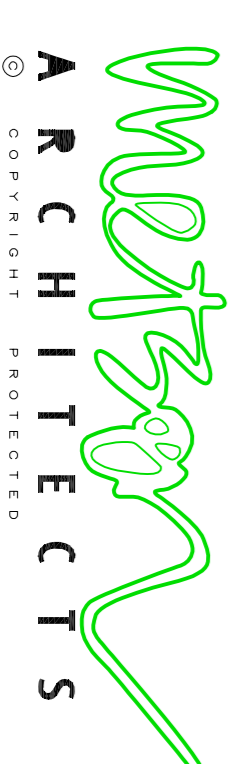
GROUND FLOOR PLAN

TOWN PLANNING

PROPOSED FLOOR PLANS



REV. B 19-02-18 LPA REQUESTS
REV. A 19-01-18 LPA REQUESTS



STUDIO 1
LEIGH PARK ROAD LEIGH ON SEA ESSEX SS9 2DU
01702 472714
admin@westcliffarchitects.co.uk

SCALE: 1/50
DATE: NOV-2017
CLIENT: AGE CONCERN
JOB: 138-140 HAMLET COURT ROAD, WESTCLIFF SS9 7LN

DWG NO. 1719-TP-01-B